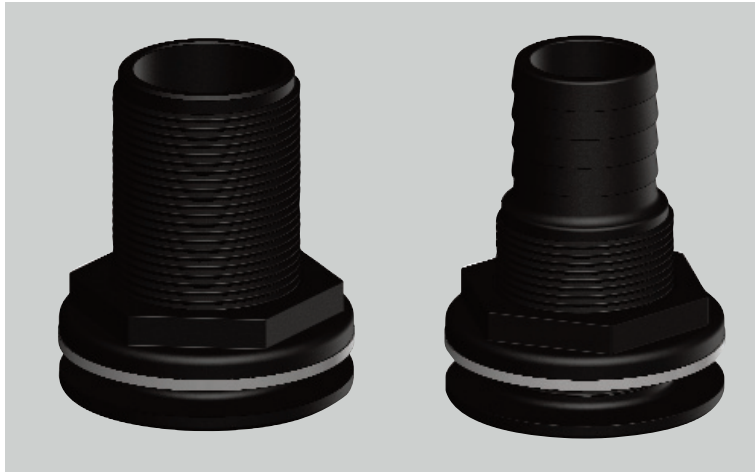








## Glass Reinforced Skin Fitting



**Tru-Design** range of Skin Fittings are the first composite through hull fitting to be certified by the International Marine Certification Institute (IMCI) Belgium.

Designed and made in New Zealand, the Skin Fitting body and nut are moulded from glass fibre reinforced nylon composite. High strength, high-modulus glass fibres provide dramatic strength, stiffness, toughness and dimensional stability. These properties allow a significant weight reduction over metallic fittings. Tru-Design Skin Fittings eliminate the corrosion and electrical bonding problems associated with metallic fittings.



Part Numbers		BSP Thread / Hose Size					
		1/2" (13mm)	3/4" (19mm)	1" (25mm)	1 1/4" (32mm)	1 1/2" (38mm)	2" (50mm)
	Skin Fitting Black	90424	90431	90422	90420	90418	90428
	Skin Fitting White	90425	90432	90423	90421	90419	90429
	Recessed Skin Fitting Black	90676	90677	90678	90679	90680	
	Recessed Skin Fitting White	90709	90710	90711	90712	90713	
	Skin Fitting with hosetail Black	90522	90523	90524	90526	90527	90528
	Skin Fitting with hosetail White	90426	90427	90430	90433	90434	90435