

LeeSan TANK FITTING INSTRUCTIONS



1. Decide on a suitable location for your tank making sure that there is adequate space above it (approx 150mm) for fittings and access for maintenance.

NOTE: Tank may “swell “ slightly when full.



2. Install the tank and secure with timber frame or straps. Appropriate LeeSan Straps are available, product code 02644

Remember that when FULL this could weigh a considerable amount so ensure that timber and fixings are of adequate strength.

NOTE: Tank may “swell “ slightly when full.



3. Install toilet making sure to follow LeeSan product instructions carefully.



4. Identify position of deck fitting/s.

Hole saw size for Pump out
= 65mm

Hole saw size for rinse out
= 44mm

Screw tap size = 5mm

Labels are supplied as separate items so can also be fitted around the outside of the flange.



5. Identify position of vent.

Suggested options are transom or side of hull. Ensure that vent is positioned far enough above water line to prevent water ingress from passing wash.

BSS require at least 10" (254mm) free space above the waterline.

Position to avoid rain ingress and possible "rubbing" damage.



6. Identify position of Tank Level Indicator. This should NOT be too close to the inlet as incoming waste will cause unit to give false readings.

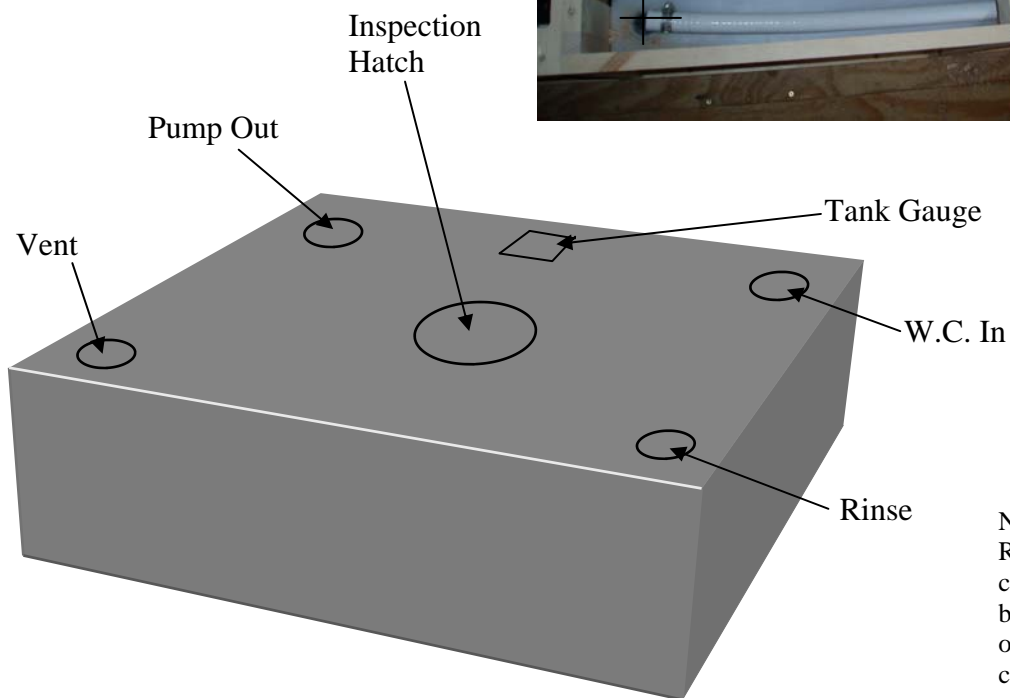
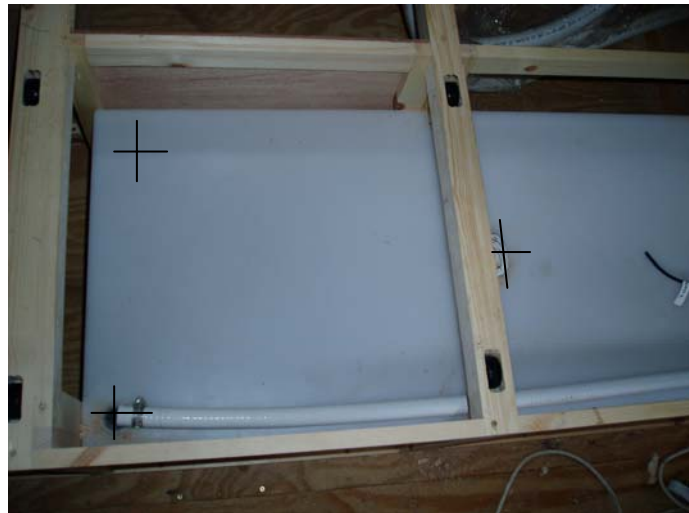


7. Trial fit pipes from W.C., Deck Fitting and Vent.

Ensure that hose can be replaced in future maintenance. Leave about 6" (150mm) spare on hose ends to allow for cutting and re-making connection if this should become necessary.



8. Mark out position of fittings on top of tank.



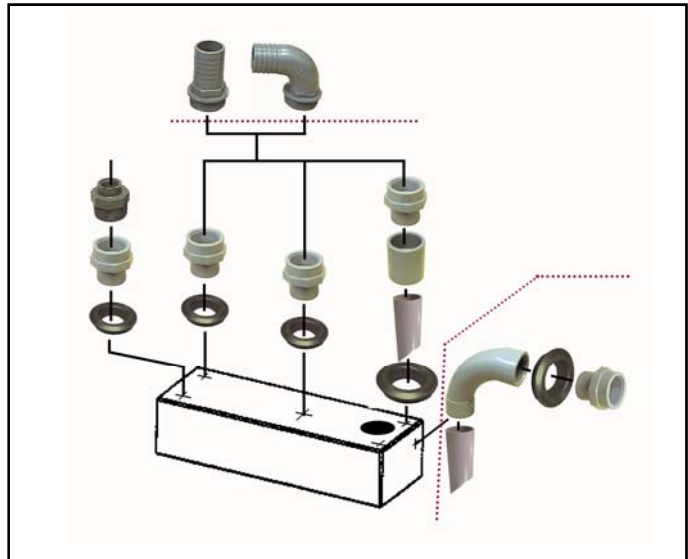
NOTE:
Rinse out connection should be opposite Pump out to ensure best cleaning flow.

9. Drill and fit Uniseals and adaptors. See Data sheet 063-1 for hole sizes.

Once hole is drilled insert Uniseal and then coat inside with washing up liquid to facilitate easy insertion of adaptor. When connection hose tails to adaptors use appropriate waterproof sealants, PTFE tape etc to ensure a liquid proof joint.



10. Note the special arrangement and different size Uniseal for pump out “dip” tube. This consists of a standard adaptor with a collar (which increases the hole diameter required) and a full tank depth, 45° chamfer ended pipe, both permanently attached with solvent weld glue.



11. Install hose tails using suitable sealant or PTFE tape.

Note the ability to rotate the fittings in the Uniseal to allow for correct alignment, particularly helpful when fitting 90° elbows..



12. Cut hoses to correct length and install.

As a belt and braces measure, we suggest using 2 hose clips on pump out and vacuum pipes.

Marking each pipe with its function can also be a great help for future maintenance.

Leave about 6" (150mm) spare on hose ends to allow for cutting and re-making connection if this should become necessary.



13. Connect hoses to all ancillaries vent, deck fittings etc.

DOUBLE CHECK ALL JOINTS AND CONNECTIONS!



14. If you plan to install a Microvent, product code 02070, this can be installed anywhere in the vent line.

Note. This should be located where it can be maintained (filters replaced) and not where water can enter and damage the element. See data sheet 010-1



15. Fit cables for tank monitor, once fitted clip back and cover (using duct tape or similar) to avoid damage from stowed items.

NOTE:
Clip back
and cover



ADDITIONAL NOTES: Answers to FAQ's on our web site

Non Return Valves and Anti Siphon information.

All hose is NOT the same! To ensure that you don't suffer from toilet smells ONLY use LeeFlex Marine sanitation grade hose.

Cheap hose clips are a false economy and can fail or even rust,, Only use our top quality LeeSan Stainless Steel hose clips.

Suggested associated products to consider: Find them on our web site!

HTS systems - To keep your "head" smelling fragrant.

Flush-it - To flush system with fresh water to eliminate smelly bacteria growth when leaving boat for a while.

Clean-n-green - To dissolve down toilet to de-scale and clean toilet, pipe work and tank.

Fast dissolving Loo Paper - To guard against troublesome blockages.

Waterproof loo paper holder - To protect paper when shower is in same area.

LeeFlex non permeable (no smell) Hose - To ensure installation is odour free.

Bronze or stainless steel deck fittings -To meet ISO standard and ensure a clean and trouble free pump out.



Lee Sanitation Ltd.

Wharf Road, Fenny Compton, Warwickshire CV47 2FE England

Helpline Tel: 0870 7669507 • Fax: 01295 770022

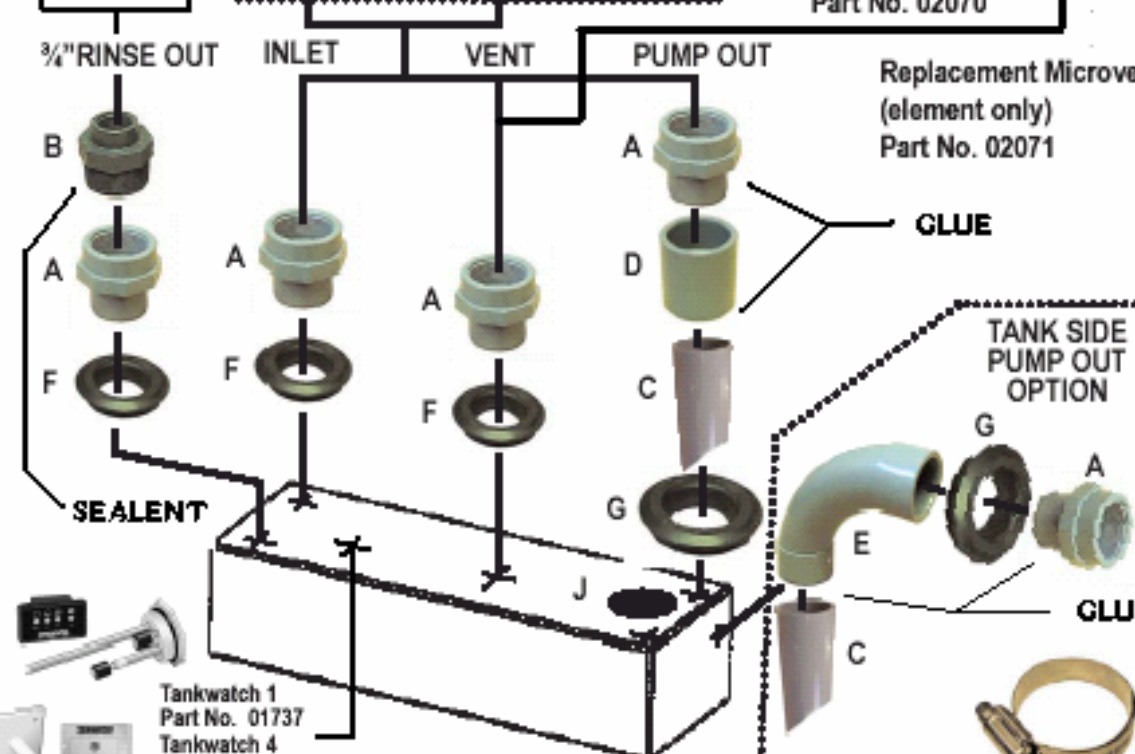
E-mail: sales@leesan.com Web Site: www.leesan.com



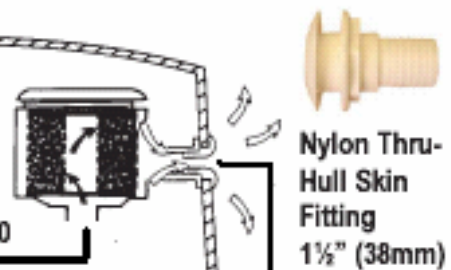
WHITE REINFORCED HOSE
01018 3/4" HOSE
LEE-FLEX WHITE
SANITATION GRADE HOSE
01028

OPTIONS - 1 1/2" HOSE TAILS
FOR FLEXIBLE OR RIGID PIPE

- A 01266 1.5" BSPF Adaptor
- B 01623 1.5" BSPM to 3/4" BSPF
- C 02013 1.5" Straight pipe
- D 02008 1.5" Straight socket
- E 02010 1.5" Short bend
- F 01543 1.5" Uniseal
- G 01544 2" Uniseal
- H 01558 1.5" Straight Hose tail
- I 01574 1.5" 90° Hose tail
- J 01585 Inspection Cover
- K 3/4" Hose Tail
- 01556
- L 3/4" 90° Hose Tail
- 01572



Complete
Microvent
Filter
Assembly
Part No. 02070



Replacement Microvent
(element only)
Part No. 02071

Nylon Thru-
Hull Skin
Fitting
1 1/2" (38mm)
Part No. 02099

GLUE

TANK SIDE
PUMP OUT
OPTION

Water protection
cowl (not supplied)

GLUE

HOSE CLIP, STAINLESS
01013 1 1/2" hose
01022 3/4" hose

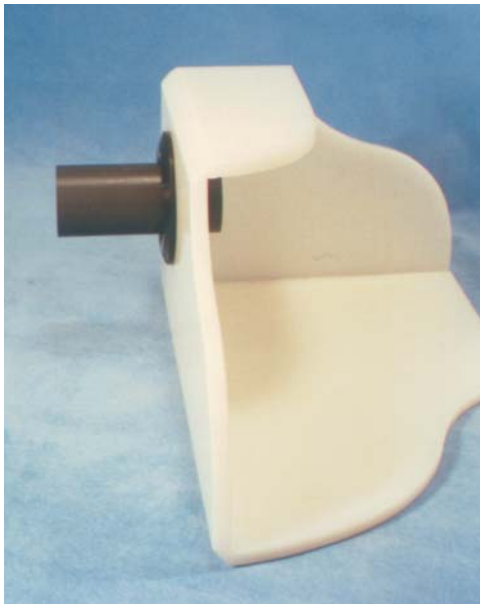
HOSE CLIPS:- RINSE OUT / VENT X 1
HOSE CLIPS:- IN LET / PUMP OUT X2

Tankwatch 1
Part No. 01737
Tankwatch 4
Part No's. 600114 22" probe
600116 45" probe



Part No.
01670

**DATA SHEET No. 063-1
UNISEAL**

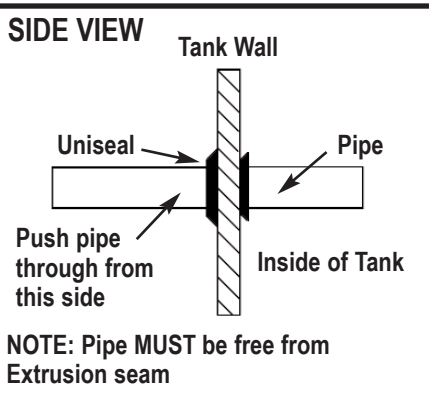


PIPE TO TANK SEALING - WITHOUT -:
Welding, Flanges, Nuts, Washers, Gaskets, "O"
Rings, long assembly times or Leaks

UNISEAL is one of those products
If you have not seen it before, it looks "TOO
GOOD TO BE TRUE"! Simply cut a hole in the
tank, insert the UNISEAL, push in the pipe and
you have a connection that is "liquid tight" up to
65 P.S.I.

UNISEAL FITTING INSTRUCTIONS

1. Cut hole to the Holesaw size indicated for the Uniseal you are using (see table)
Example. 3" Uniseal = 4" Hole (Holesaw).
2. Ensure that the hole is clean cut with sharp edges. Irregularities could cause poor seating and ultimate leakage.
3. Insert the Uniseal into the hole with the wide side facing the pipe to be inserted.
4. Make certain that the pipe end to be inserted is clean cut, file the edges so that there are no sharp points to cut.
5. Using detergent, lubricate the outside of the pipe end to be inserted, then push the pipe through the Uniseal from the large flange side. The detergent will be squeezed off as the pipe passes through the Uniseal. The Coefficient of friction of the rubber holds the pipe tightly in place.



PART No.	PIPE I.D.	PIPE O.D.	HOLE SIZE
01538	3/8"	0 11/16" (17mm)	1" (25mm)
01539	1/2"	0 7/8" (21mm)	1 1/4" (32mm)
01540	3/4"	1 1/16" (27mm)	1 1/2" (38mm)
01541	1"	1 5/16" (33mm)	1 3/4" (44mm)
01542	1 1/4"	1 11/16" (42mm)	2" (50mm)
01543	1 1/2"	1 15/16" (48mm)	2 1/2" (64mm)
01544	2"	2 3/8" (60mm)	3" (76mm)
01545	3"	3 1/2" (89mm)	4" (101 mm)
01823	3 1/2"	3 1/16" (100mm)	5" (127mm)
01546	4"	4 1/2" (114mm)	5" (127mm)

Lee Sanitation Ltd.
Wharf Road, Fenny Compton
Warwickshire CV47 2FE England

Tel: Int.+44 (0)1295 770000
Fax: Int.+44 (0)1295 770022

E-Mail: sales@leesan.com
Web Site: www.leesan.com

